

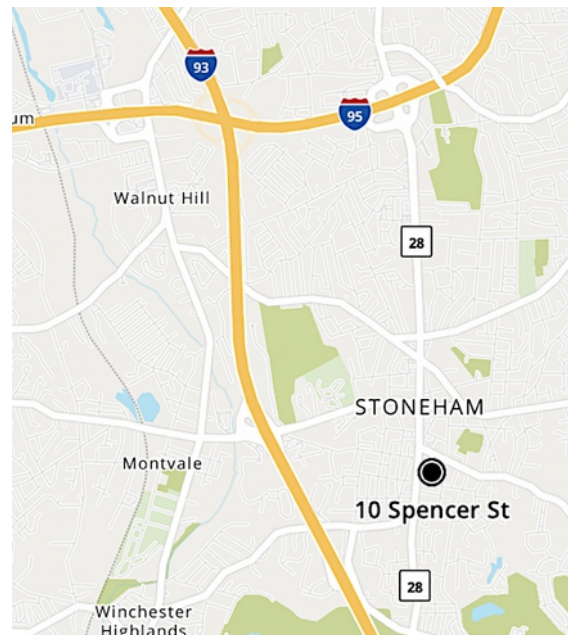
10 Spencer Street, Stoneham, MA



10-24 Spencer Street is a single-story, industrial building located just outside of Stoneham Center. The building consists of 8 commercial units each with front office space and rear warehouse.

First Floor Office / Flex Space For Lease

- **1,000 – 2,000** +/-sf
- Front office space
- Reception + private offices
- Conference room
- Private restroom
- Break room / kitchen
- Optional: Warehouse space with 14'H overhead loading dock door, approximately 14'H clear and 16'H to deck
- Gas heat
- Air conditioned front office
- \$20.00 per sf plus utilities



Edward Carbone, CCIM

781.935.5444 (o)

978.930.1579 (c)

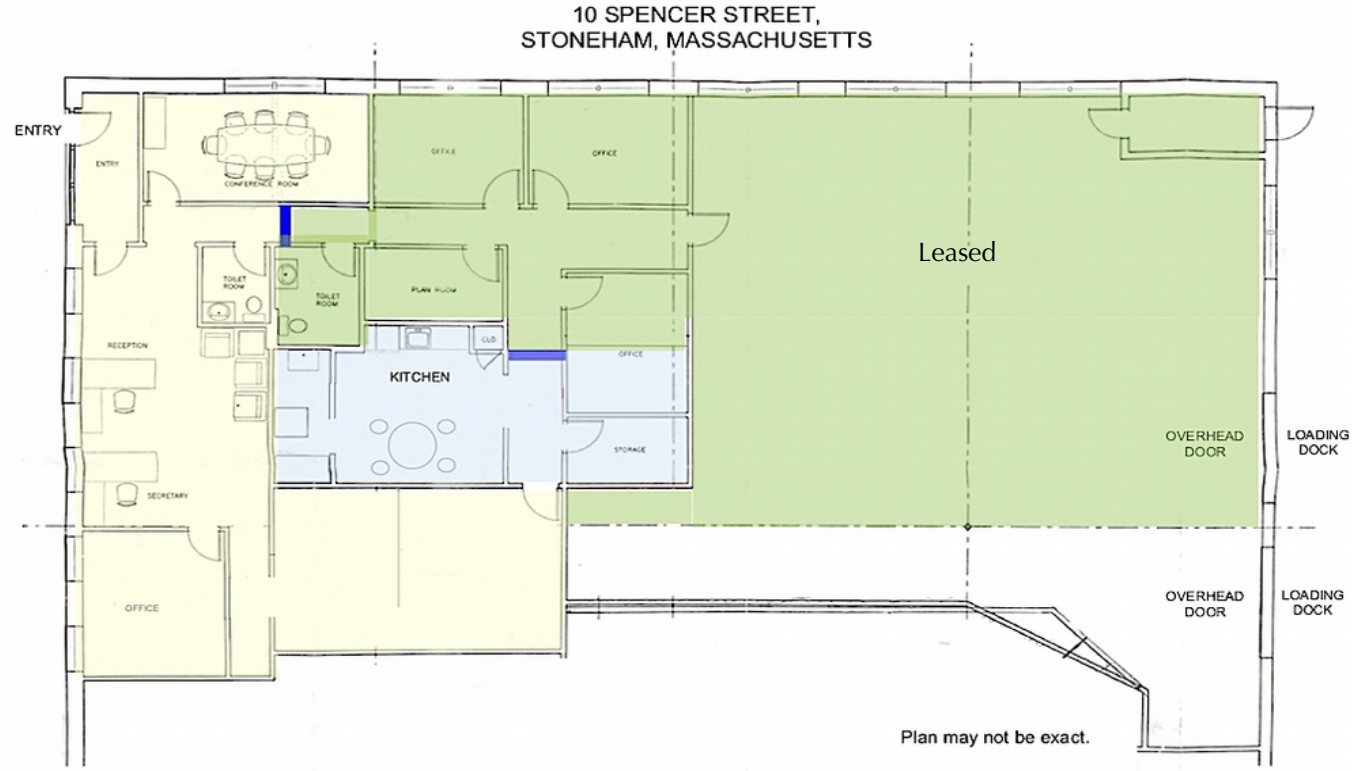
Edward@CarboneRE.com





CarboneRE.com

CARBONE Commercial Real Estate, Inc.

All information furnished is from sources deemed reliable, but no warranty or representation is made as to the accuracy thereof, and the same is presented subject to errors, omissions, change of price, rental or other conditions, prior sale or lease, or withdrawal without notice.
Copyright © 2024 Carbone Commercial Real Estate, Inc., agent of the Owner/Lessor.

10 SPENCER STREET, STONEHAM, MA



-  Available Office: 1,242 +/-sf
-  Either common or dedicated available: 429 +/-sf
-  Optional warehouse space with loading
-  Leased

781.935.5444

CarboneRE.com

CARBONE Commercial Real Estate, Inc.

10 SPENCER STREET, STONEHAM, MA



781.935.5444
CarboneRE.com

CARBONE Commercial Real Estate, Inc.

