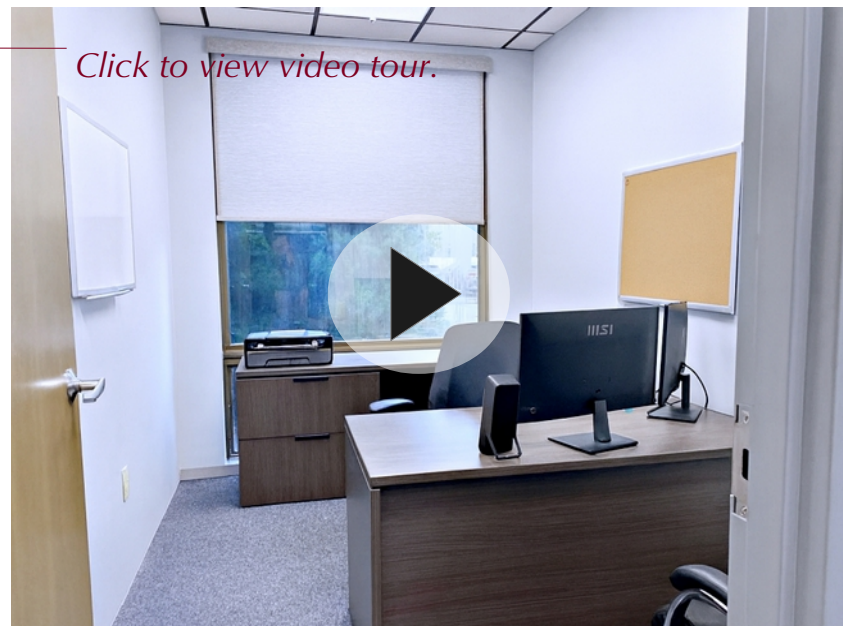


1 Mountain Road, Burlington, MA



1st FLOOR OFFICE FOR LEASE

- 1,300 +/- rsf
- 6-room, first floor office
- 5 Private offices plus large open space
- Ceiling: 8' 7"H
- 2' x 4' recessed lights
- Ample on-site parking
- Located at the corner of Winn Street & Mountain Road; On the Woburn/Burlington line and approx. 0.4 miles to Route 128/95.
- \$2,600 per month including utilities



Click to view video tour.

Edward Carbone, CCIM

781.935.5444 (o)

978.930.1579 (c)

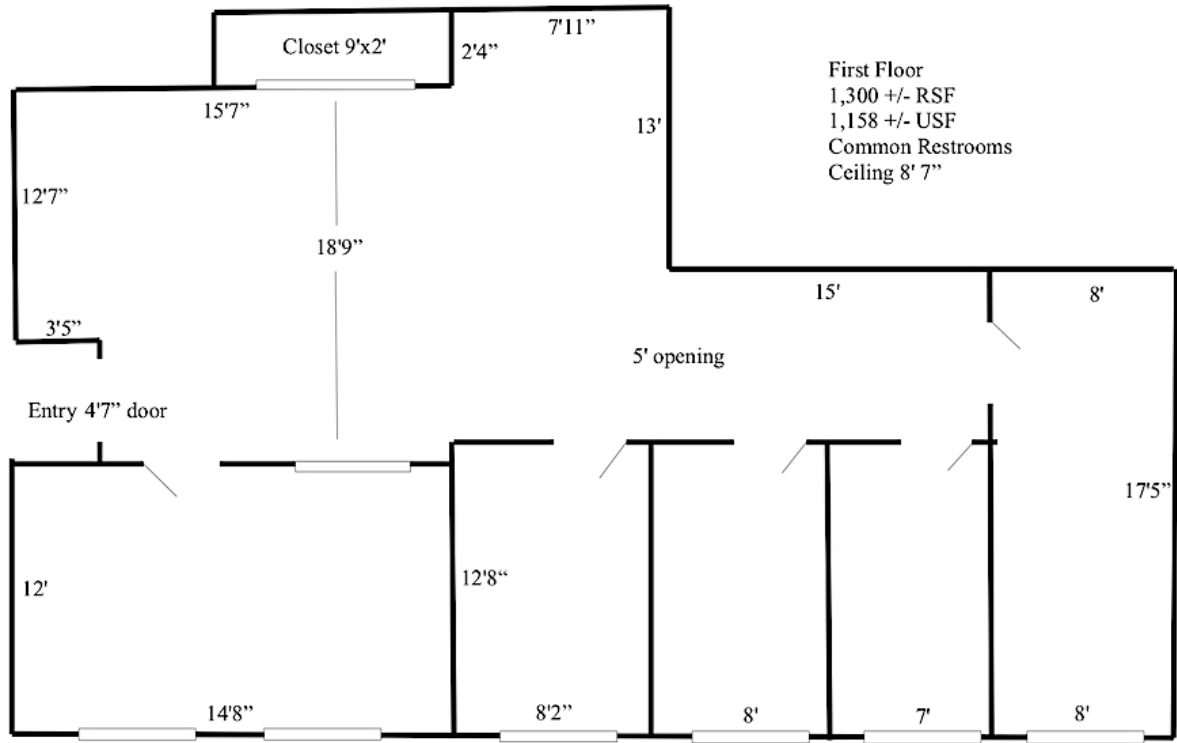
Edward@CarboneRE.com

CarboneRE.com

CARBONE Commercial Real Estate, Inc.

All information furnished is from sources deemed reliable, but no warranty or representation is made as to the accuracy thereof, and the same is presented subject to errors, omissions, change of price, rental or other conditions, prior sale or lease, or withdrawal without notice.
Copyright © 2025 Carbone Commercial Real Estate, Inc., agent of the Owner/Lessor.

1 Mountain Road, Burlington, MA



Plan not drawn to scale. Plan not exact.



781.935.5444
CarboneRE.com

CARBONE Commercial Real Estate, Inc.