

271 Salem Street, Woburn, MA - Unit L



Industrial Bay – For Lease

- **UNIT L:** 3,000 +/-sf (100' x 30')
- 16'H +/- Ceiling
- 1 Ground level loading door
8'W x 10'H
- 1 Loading dock with overhead door
8'W x 10'H
- 2 Restrooms
- Zoned: General Industrial
- Gas Heat
- Available 3/01/2026
- \$5,500 per month MG + utilities



Edward Carbone, CCIM

781.935.5444 (o)

978.930.1579 (c)

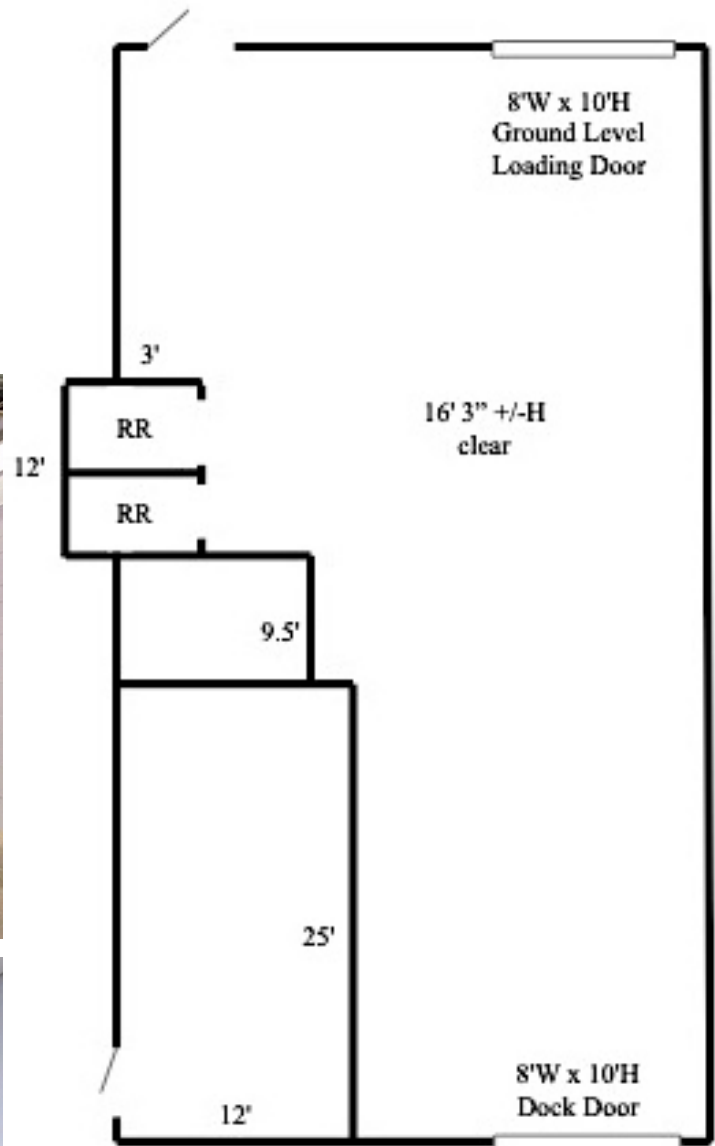
Edward@CarboneRE.com

CarboneRE.com

CARBONE Commercial Real Estate, Inc.

All information furnished is from sources deemed reliable, but no warranty or representation is made as to the accuracy thereof, and the same is presented subject to errors, omissions, change of price, rental or other conditions, prior sale or lease, or withdrawal without notice.
Copyright © 2026 Carbone Commercial Real Estate, Inc., agent of the Owner/Lessor.

271 SALEM STREET, WOBURN, MA – UNIT L



Plan not drawn to scale. Plan not exact.

Interior photos shown were taken
February 2021 and may not be exact.

781.935.5444
CarboneRE.com

CARBONE Commercial Real Estate, Inc.