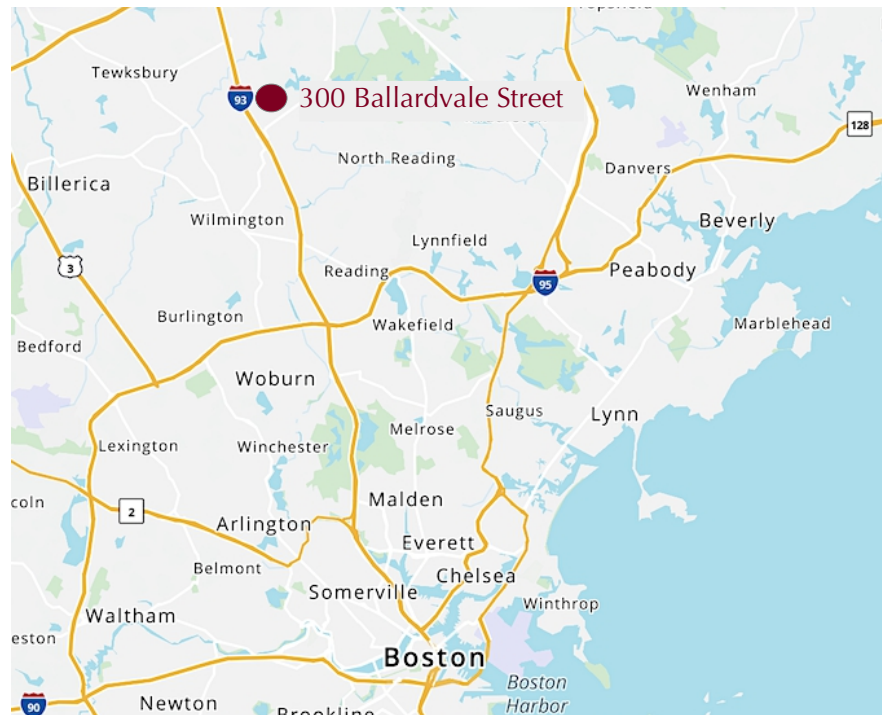


300 Ballardvale Street, Wilmington, MA



5,158 +/-SF FIRST CLASS OFFICE SPACE - FOR SUBLEASE

- **Unit 200:** 5,158 +/-sf
- 2nd Floor
- 6 Private windowed offices, 2 conference rooms, open bullpen with 14 cubicles, kitchen, wellness room
- Abundant common parking
- Common restrooms
- Common loading dock
- Freight elevator
- Common lounge spaces
- Fitness and shower facility
- For SubLease through March 29, 2029
- \$19.00 per sf MG



Edward Carbone, CCIM

781.935.5444 (o)

978.930.1579 (c)

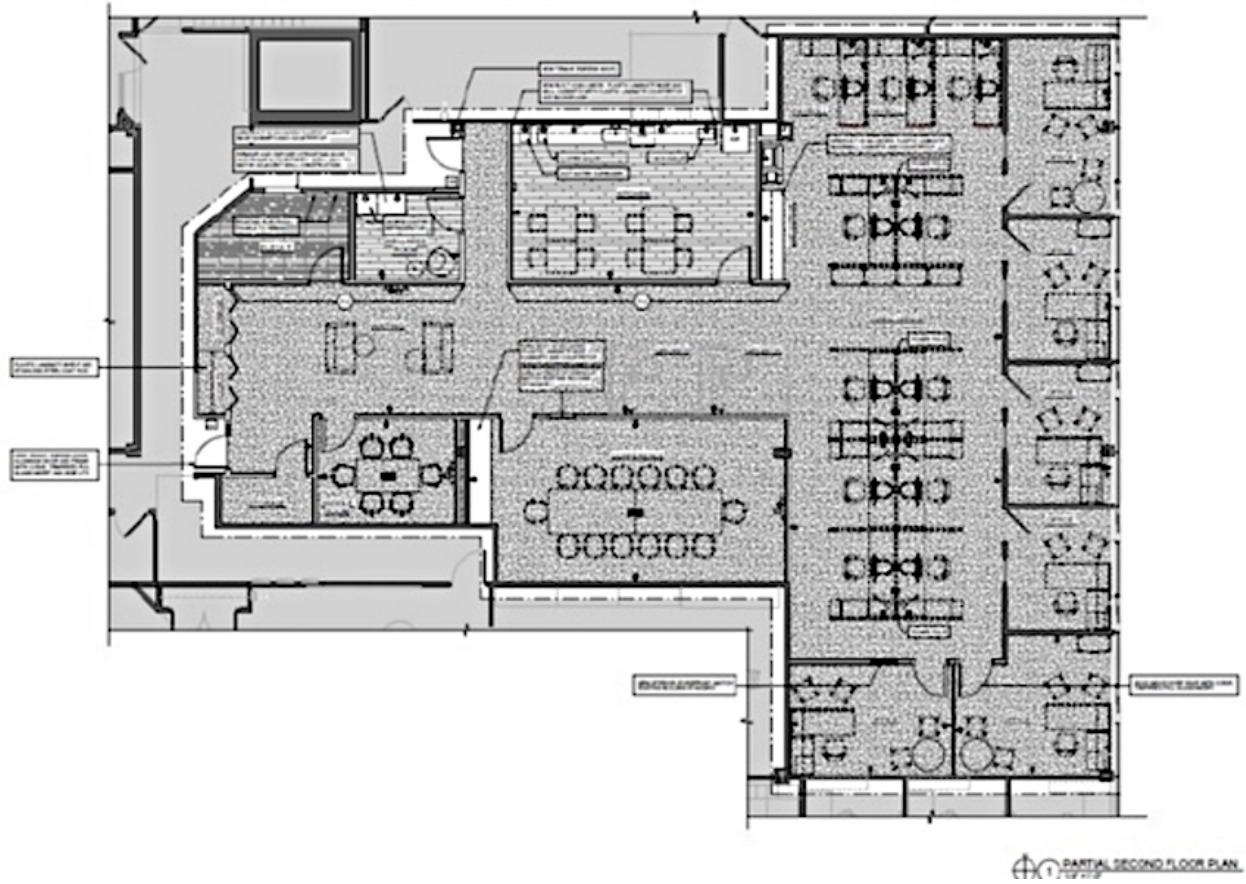
Edward@CarboneRE.com

CarboneRE.com

CARBONE Commercial Real Estate, Inc.

All information furnished is from sources deemed reliable, but no warranty or representation is made as to the accuracy thereof, and the same is presented subject to errors, omissions, change of price, rental or other conditions, prior sale or lease, or withdrawal without notice. Copyright © 2026 Carbone Commercial Real Estate, Inc.

300 BALLARDVALE STREET, WILMINGTON, MA

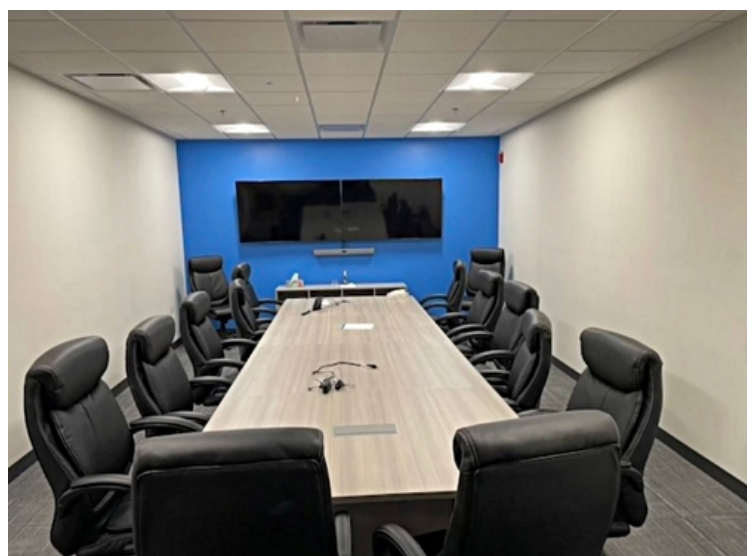
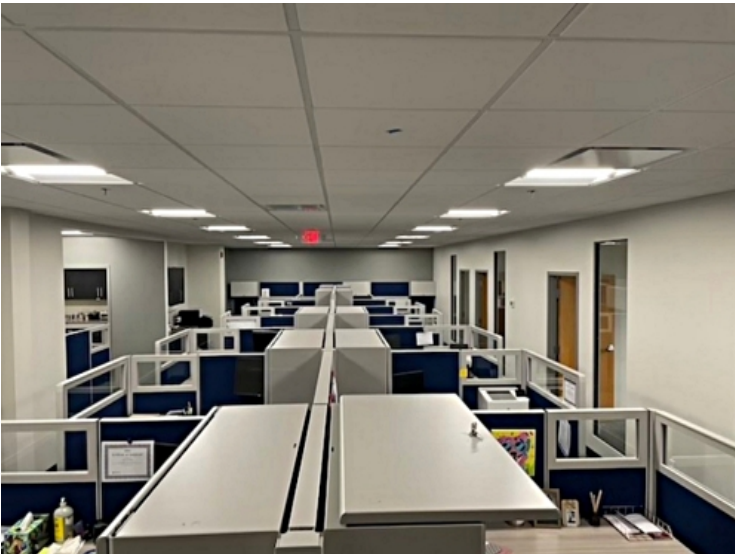


781.935.5444

CarboneRE.com

CARBONE Commercial Real Estate, Inc.

300 BALLARDVALE STREET, WILMINGTON, MA



781.935.5444
CarboneRE.com

CARBONE Commercial Real Estate, Inc.