

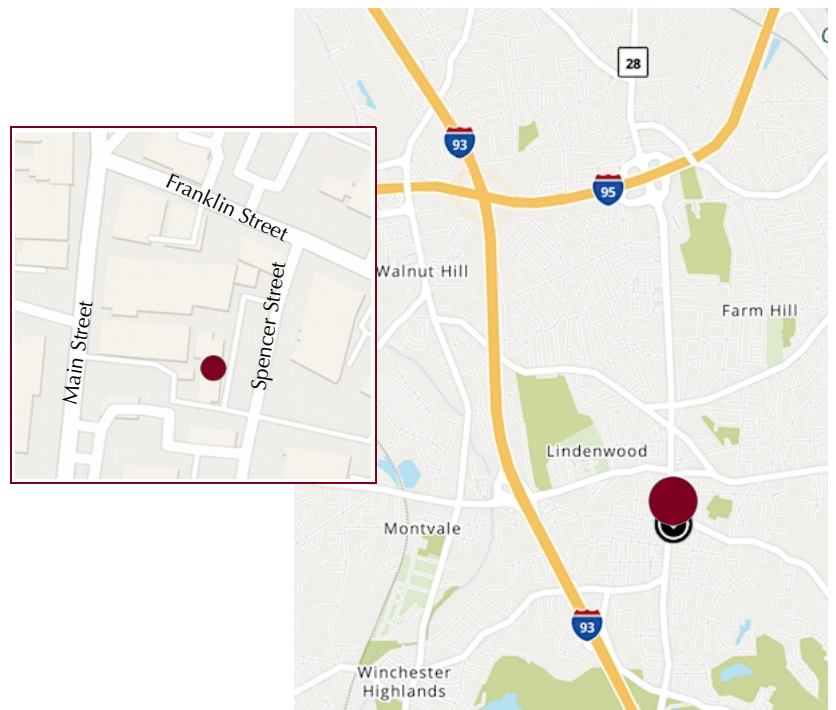
35R Spencer Street (426 Main Street), Stoneham, MA



7,600 SF For Lease

- 3,800 to 7,600 +/- sf (3,800 sf per floor)
- 1 Ground level loading 8'H
- 1 Loading dock door 8'H
- First floor ceiling height 10'H; Second 8'9"H
- Fire sprinkler system
- 1 Parking space in front of loading door
- Zoned: Central Business District
- Available now
- 1 to 3 year lease
- For Lease: \$4,500 per month plus utilities

No heat. No sewer. No water.
Natural gas is available. Water is available.
Tenant, at Tenant's cost, may add heating system.



Edward Carbone, CCIM

781.935.5444 (o)

978.930.1579 (c)

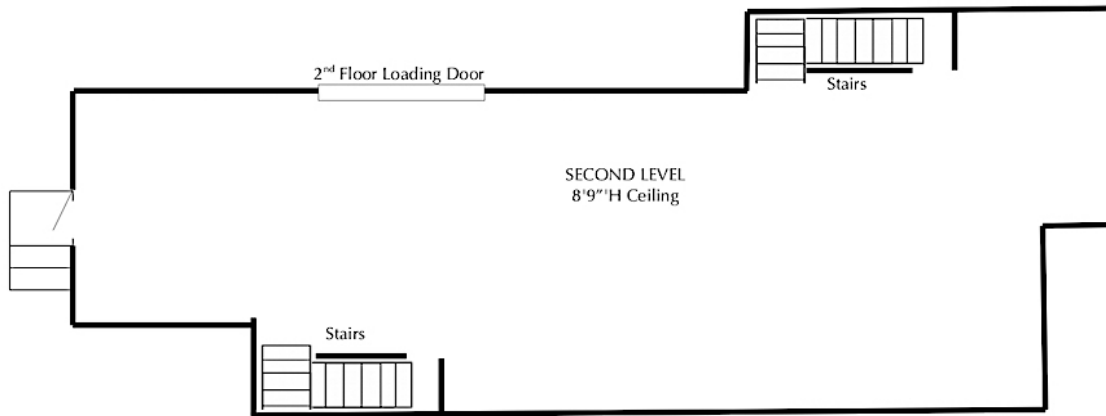
Edward@CarboneRE.com

CarboneRE.com

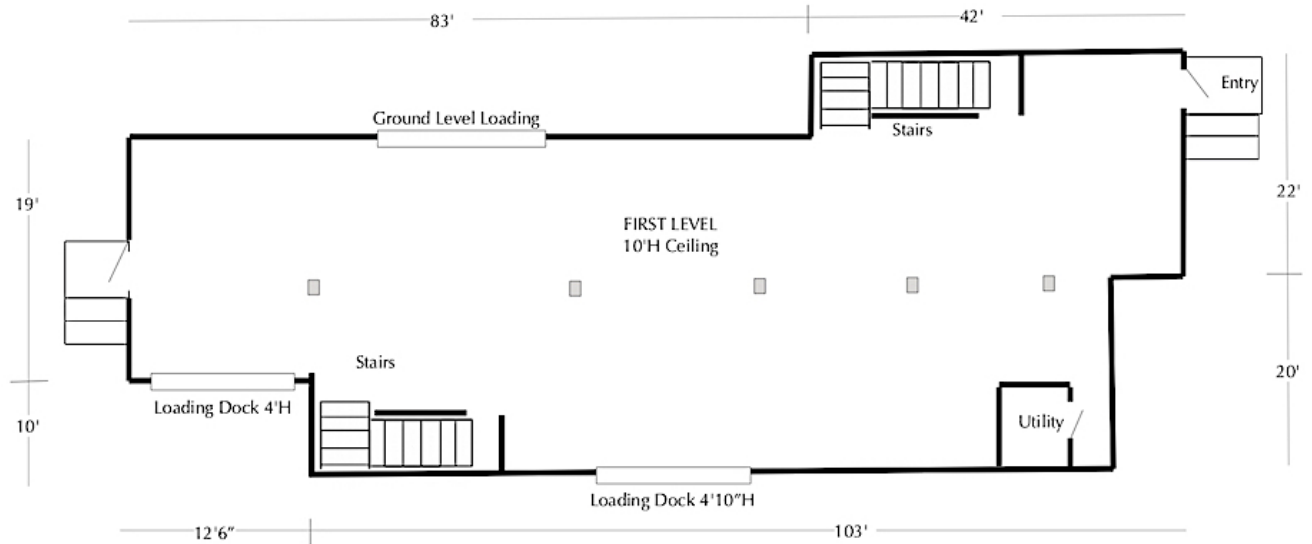
CARBONE Commercial Real Estate, Inc.

All information furnished is from sources deemed reliable, but no warranty or representation is made as to the accuracy thereof, and the same is presented subject to errors, omissions, change of price, rental or other conditions, prior sale or lease, or withdrawal without notice.
Copyright © 2025 Carbone Commercial Real Estate, Inc., agent of the Owner/Lessor.

35R SPENCER STREET (426 MAIN STREET), STONEHAM, MA



Plan not drawn to scale. Plan not exact.



Plan not drawn to scale. Plan not exact.

35R SPENCER STREET (426 MAIN STREET), STONEHAM, MA



781.935.5444
CarboneRE.com

CARBONE Commercial Real Estate, Inc.